



Imperial®

DEPENDABLE UNDER PRESSURE™

IMPERIAL TOOLS AUSTRALIA & NEW ZEALAND

CoolTools
Australia



SHORTFORM CATALOGUE 2017



CoolTools
Australia

Find us on



IMPERIAL TOOLS AUSTRALIA & NEW ZEALAND

www.imperialtools.com.au

<https://www.facebook.com/imperialtoolsaustralianewzealand/>



MADE IN U.S.A.

MANIFOLDS



Imperial
DEPENDABLE UNDER PRESSURE™



481CKPC

400 Series Deluxe 2 Valve Brass Manifold

- **Dual O ring Valve seals and Soft Seat Valves**– Precision engineered with dynamic, full flow design for fast, trouble free evacuation and charging.
- **Ergonomic Handles**– Durable, soft touch, non-slip (even with oily fingers)



580CKPSC

580 Series 2 Valve 4 Port Manifold

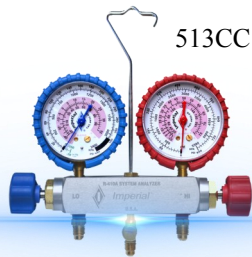
- **2 Auxiliary Valve Ports**– Allows multiple hook-ups for vacuum gauge, vacuum pump, recovery unit, oil injection and add-ons.
- **Deep Vacuum Valve Design**– Proven diaphragm type, soft seat valves require only fingertip pressure to close completely. One turn to fully open/close. Superior for deep vacuum service.



680CKPSC

680 Series 4 Valve Manifold (840 Series R410A)

- **4 Valve Efficiency**– Vacuum, Lo side, Hi side and refrigerant lines have individual connections and control valves. No need to switch lines between operations.
- **4 Times Faster Evacuation**– 3/8" vacuum port and oversize internal passages evacuate systems 4 times faster than ordinary manifolds.
- **Deep Vacuum Valve Design**– Proven diaphragm type, soft seat valves require only fingertip pressure to close completely. One turn to fully open/close. Superior for deep vacuum service.



513CC

510 Series 2 valve manifold, R410A Now also available for R32

- **Auxiliary Valve Port**– Allows multiple hook-ups for vacuum gauge, vacuum pump, recovery unit, oil injection and add-ons.
- **Dual O ring Valve seals and Soft Seat Valves**– Precision engineered with dynamic, full flow design for fast, trouble free, evacuation and charging.
- **Ergonomic Handles**– Durable, soft touch, non-slip (even with oily fingers)

PART NUMBER	DESCRIPTION
482CKPC	2 Valve brass manifold, 68mm gauges R22, R404A, R134a, KPa, psi C° complete with 3 x 36" hoses 1/4"SAE. (481CKPC same but supplied without hoses.) Replacement gauges 420BCKP (Blue), 420RCKP (Red)
513CC	R410A 2 valve manifold no sightglass. 5/16" SAE fittings inc centre tee. 68mm gauges R410A, KPa, psi, F°,C°.
514CC	R410A 2 valve manifold no sightglass. 5/16" SAE fittings inc centre tee. 3x 36" hoses with 1/2" 20UNF fittings. 68mm gauges R410A, KPa, psi, F°,C°. Replacement gauges 452-CB (Blue) 452-CR (Red)
516CC	R410A/R32 2 valve manifold no sightglass 5/16" SAE fittings inc centre tee. 3x 36" hoses with 1/2" 20UNF fittings. 68mm gauges R410A, KPa, psi, F°,C°. Replacement gauges 453-CB (Blue) 453-CR (Red)
580CKPSC	2 valve premium manifold with sightglass 1/4"SAE fittings. 68mm gauges R22, R404A, R134a, KPa, psi C° .
581CKPSC	2 valve manifold with sightglass, 3 x (1.5m) 60" hoses 1/4" SAE fittings 68mm gauges R22, R404A, R134a, KPa, psi C° . Replacement gauges 420BCKP (Blue), 420RCKP (Red)
572CKPC	R410A 2 valve manifold with sightglass, 5/16" SAE fittings inc centre T. 68mm gauges R410A, KPa, psi, F°,C°, hose hanger plus 3 x 60" Hoses. Replacement gauges 452-CB (Blue) 452-CR (Red)
582CKPC	Combination R22 R407C R410A 2valve manifold with sightglass. 1/4" SAE fittings. 68mm gauges R22, R407C, R410A, KPa, psi, C° 3x36" hoses 1/4"SAE to 5/16" SAE . Replacement gauges 428-CKP (Blue) 429-CKP (Red)
680CKPSC	4 valve premium manifold with sightglass, 1/4" SAE fittings. 68mm gauges R22, R404A, R134a, KPa, psi C° .
681CKPSC	4 valve manifold with sightglass, 3x 60" 1/4" SAE hoses plus 60" 3/8" vacuum hose, 68mm gauges R22, R404A, R134a, KPa, psi, C° .Replacement gauges 420BCKP (Blue), 420RCKP (Red)
841CKPSC	R410A 4 valve premium manifold with sightglass. 3x 60" 5/16" SAE hoses plus 60" 3/8" vacuum hose, 68mm gauges R410A, KPa, psi, F°,C°. Replacement gauges 452-CB (Blue) 452-CR (Red)



HOSES

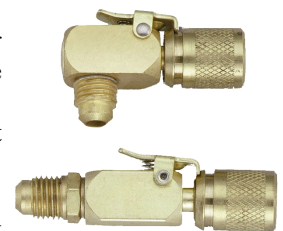
- **Imperial Polarshield® charging hoses are UL recognised** and meet UL-1963, SAEJ2196 & EPA requirements for strength, pressure and refrigerant permeation. 800PSI working, 4000 PSI burst.
- **Rugged Kevlar Multi Refrigerant Nylon Barrier Construction**– Polarshield® hoses are compatible with all CFC, HCFC and HFC refrigerants (R410a, R404A, R407C, R134a).



PART NUMBER	DESCRIPTION
203MRS	Set of 3-36" (3') Charging Hoses (B,Y,R) - R-410A with 5/16" SAE fittings. R410A
205MRS	Set of 3-60" (5') Charging Hoses (B,Y,R) - R-410A with 5/16" SAE fittings R410A
803MRS	Set of 3 - 36" (3') Charging Hoses (B,Y,R) with 1/4"SAE fittings. R22
805MRS	Set of 3 - 60" (5') Charging Hoses (B,Y,R) with 1/4"SAE fittings. R22
853MRS	Set of 3 - 36" (3') Charging Hoses (B,Y,R) with 1/4"SAE fittings to 5/16"SAE. R410A/R22
856MRS	Set of 3 - 72" (6') Charging Hoses (B,Y,R) with 1/4"SAE fittings to 5/16"SAE. R410A/R22
956MRS	Set of 3 - 72" (6') Charging Hoses (B,Y,R) with 1/4"SAE Fittings and Ball Valve Shutoff. R22
536FTY	36" (3') Vacuum Hose 3/8"SAE Fitting
560FTY	60" (5') Vacuum Hose 3/8"SAE Fitting

KWIK-COUPLER™ SERVICE HOSE SHUTOFF

- The Kwik-Coupler and Kwik Coupler set is intended for use with refrigeration or air conditioning service hoses when connecting to core type valve access fittings. The conventional thread is converted to a simple push/pull connection which is simpler, faster and more convenient. Valve cores are depressed automatically without adjustments or loss of refrigerant.
- Simplifies operation of charging critical amount of refrigerant into small systems.
- Eliminates hazardous discharge of refrigerant and oil from system when disconnecting hoses.
- Available in 1/4"SAE and 5/16"SAE (R410a) fittings.

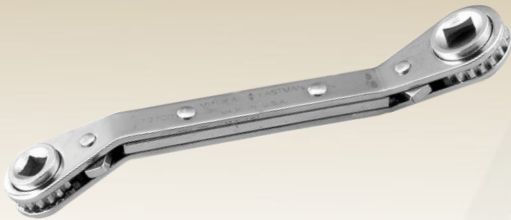


PART NUMBER	DESCRIPTION
16C	Automatic shutoff quick couplers 1/4" SAE straight.
17C	Automatic shutoff quick couplers 1/4" SAE right angle
26C	R410A automatic shutoff quick coupler 5/16" SAE straight.
27C	R410A automatic shutoff quick coupler 5/16" SAE right angle.
S8920074	Replacement Female 1/4" Couplers suit 16C 17C
S10000999	Replacement female 5/16" couplers suit 26C 27C

WRENCHES For Refrigeration and Air-Conditioning Service



127-C Compressor access valve wrench. Chrome plated. Has 1/4", 3/8", 3/16" and 5/16" square drive reversible ratchets. Specifically designed for use on compressors with access valves in hard to reach places.



127-CO Same as 127-C except with 25° offset that provides for additional convenience in hard to reach areas.



124-C Combination wrench with the 4 sizes most needed for servicing refrigeration and air-conditioning equipment.

- 9/16" hex for dust cap on access valves and oil plug on compressor
- 1/2" hex for compressor mounting bolts.
- 1/4" square for valve stem and service valves.
- 3/16" square for valve refrigerant charging tanks.



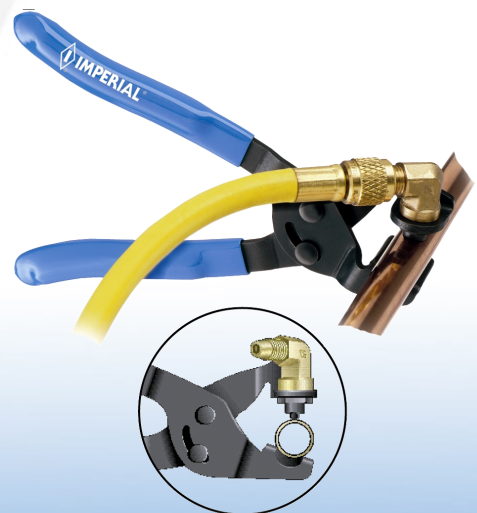
125-C Rugged steel forged wrench with 4 sizes covering almost any application. Ratchet has 1/4" square drive on one end, the other end has 3/16" and 5/16" square openings plus 9/16" hex opening.

SERVICE ACCESSORIES

KWIK-VISE™ Refrigerant Recovery Tool.

PT-109

- Line piercing / refrigerant recovery tool pierces, seals and locks on to copper lines in one swift motion.
- Self adjusting! No need to adjust the tool for different sized tubing. The tension system automatically adjusts and locks the pliers on to the copper tubing. Suits 1/4" - 1/2" O.D. Tubing.
- To use, simply position the PT-109 on to the tubing to be pierced, close the pliers quickly and firmly. The pliers will automatically adjust and lock into a tightly sealed secure position and will stay locked until released.



FEATURES

- Replaceable hardened steel and brass access valve assembly p/n S16002045
- Handles copper tubing from 1/4" to 1/2" O.D.
- Durable, made with high carbon heat treated jaws.
- Works with all refrigerants, HFC, CFC, HCFC and Zeotropic/Azeotropic.
- 90° elbow on access valve eliminates tangling and interference problems.
- Replacement seals part number S10000539
- Replacement Piercing Pin part number S16002045

HI-DUTY® TUBE CUTTERS

Cutters for 1/8" to 1-1/8" and 1/4" to 1-5/8" O.D Tubing.

TC1000SP For 1/8" to 1-1/8" O.D. tubing includes 2 x S75015 general purpose cutting wheels.

TC1010SP For 1/8" to 1-1/8" O.D. tubing includes 2 x S75046 cutter wheels for stainless steel.

312FCSP For 1/4" to 1-5/8" O.D. tubing includes 2 x S75015 general purpose cutting wheels.



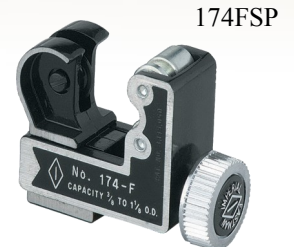
IMP®MINI TUBE CUTTERS for 1/8" to 5/8" , 3/16" to 7/8" and 3/8 to 1 1/8" O.D Tubing.

TC1050SP For 1/8" to 5/8" O.D. tubing includes 1 x S32633 general purpose cutting wheel. Swing radius 1-1/4"



TC2050SP For 3/16" to 7/8" O.D. tubing includes 1 x S75015 general purpose cutting wheel. Swing radius 1-11/16".

174FSP For 3/8" to 1-1/8" O.D. tubing includes 2 x S75015 general purpose cutting wheel. Swing radius 1-15/16" (2-1/4" swing radius with 1-1/8" tube)



ADJUST-O-MATIC™ LARGE TUBE CUTTERS for 3/8" to 2-5/8" and 2" to 4-1/8" O.D Tubing.

206FBSP For 3/8" to 2-5/8" O.D. tubing includes 2 x S74761 general purpose cutting wheels.

406FA For 2" to 4-1/8" O.D. tubing includes 2 x S74833 general purpose cutting wheel.



RATCHETING TUBE CUTTERS for 1/8" to 5/8".

TC1050RH Ideal for tube cutting in tight places where a complete revolution of the cutter can't be made. TC1050 cutter easily removes from handle. Includes ratchet handle, TC1050 tube cutter and 1x S32633 cutting wheel. Capacity 1/8" - 5/8" OD tubing.



Replacement Cutting Wheel Part Number	Suits
TC1A	Kit - 3 Wheels #75015, 1 Screw #74762 For General purpose. Suits: Imp 174F, 312FC, TC1000, TC1010, TC1550, TC2050
TC1B	Kit - 3 Wheels #75046, 1 Screw #74762 For hard material. Suits TC1000, TC1010, TC1550, TC2050, 312FC, 174F.
TC1C	Kit - 2 Wheels #32633, 1 Screw #26883 General purpose. Suits TC1050, 227FA
TC1E	Kit - 1 Wheel 1 screw for copper suits the 206-FBSP
S74833	Cutting Wheel to Suit 406FA

TRIPLE HEAD LEVER TYPE



370-FHC TRIPLE HEAD 180° TUBE BENDER

- Bends 3/16", 1/4", 3/8" and 1/2" soft drawn or annealed tubing.
- Makes smooth, tight-radius 180° bends.
- Calibrated markings—for making accurate Left handed, Right handed and offset bends.
- Adjustable hook.
- Optimum bending radius for each tubing size.
- Made of durable yet lightweight die-cast aluminium.



368-FH TRIPLE HEAD 90° TUBE BENDER

- Bends 3/16", 1/4", 5/16" and 3/8" soft copper, thin wall steel and aluminium tubing.
- Makes smooth, tight-radius 90° bends.
- Calibrated markings -for making accurate Left handed, Right handed and offset bends.
- Optimum bending radius for each tubing size.
- Made of durable yet lightweight die-cast aluminium.



470-FHC TRIPLE HEAD 180° TUBE BENDER WITH ROTO-LOK™ INDEXING HANDLE

- Bends 3/16", 1/4", 5/16" and 3/8" tubing.
- Patented quick action indexing lever positions 2 stage handle midway through bend when both handles begin to meet. This allows for easy fabrication of bends up to 180° with reduced effort.
- Makes smooth, tight-radius 180° bends.
- Calibrated markings—for making accurate Left handed, Right handed and offset bends.
- Optimum bending radius for each hook size.
- Made of durable yet lightweight die-cast aluminium.

LEVER TYPE

364-FHA LEVER TYPE TUBE BENDERS

- Bend 1/4" to 1" tubing
- Each tool bends 1 size of tubing
- Open sided bender which slips over tube at any point.
- Makes smooth, tight radius bends up to 180° with minimum effort. No scoring or flattening of tubing.
- Calibrated markings to show angle of bend. Wide hook grips tube securely.



364-FHB SWIVEL HANDLE LEVER TYPE TUBE BENDERS

- Bend 1/4" to 1/2" tubing
- Each tool bends 1 size of tubing
- The FHB series has a swivel handle which can be repositioned when both handles begin to meet. This simple feature allows easy fabrication of bends up to 180° with reduced effort, better control and without the crossing of handles, typical of most other lever benders.
- Wide hook grips tube securely.

TUBE SIZE→	1/4"	3/8"	1/2"	5/8"	3/4"	7/8"	1"
FHA SERIES	364FHA04	364FHA06	364FHA08	364FHA10	364FHA12	364FHA14	364FHA16
FHB SERIES	364FHB04	364FHB06	364FHB08				



TUBE EXPANDER



175EX XPANDR™ SWAGING/EXPANDING KIT

- Easily expands tube for braze & soldered joints in seconds.
- Floating jaw head design is self-centering for fast, accurate alignment.
- Re-rounds deformed tube ends.
- Accurate joints in seconds without using fittings.
- For soft copper and soft thin wall steel and stainless steel tubing.
- Save 60-70% of time over conventional swaging tools.
- Reduces soldering by 50% over standard fittings.
- Meets ARI tube insertion recommendations.
- Long life with high alloy hardened steel jaw segments.
- XpandR™ Tool comes with non-slip, ergonomically designed grips.
- Supplied in a compact carrying case.
- Includes 5 heads: 3/8", 1/2", 5/8", 3/4" and 7/8".

SPRING BENDERS

102F SPRING BENDERS

- Bend 1/4" to 1" to 7/8" O.D soft copper and aluminium tubing.
- Each tool bends 1 size of tubing
- Spring benders allow hand bending of soft tubing to any shape without bending or crushing the tube.
- Manufactured from special spring steel with zinc finish. Spring end is "belled" for quick tube removal.
- **101F** set of 6 for 1/4", 5/16", 3/8", 7/16", 1/2" and 5/8" OD tubing.



FLARING & SWAGING TOOLS

45° FLARING TOOLS

For 3/16", 1/4", 5/16", 3/8", 7/16", 1/2" and 5/8" O.D. tubing.

195-FC Flares 7 sizes of tubing. Rugged forged steel slip-on yoke and hardened flaring bar. Positive clamping action of bars prevents tube slippage. Self-centering yoke with swivel-type hardened steel, chrome-finished flaring cone forms better flares with less effort. Design of yoke permits flaring where there is little space between nut and tube end. Satin finish nickel-chrome plated.



45° ROL- AIR™ FLARING TOOLS

Flares and burnishes 3/16", 1/4", 5/16", 3/8", 1/2" and 5/8" O.D. tubing.

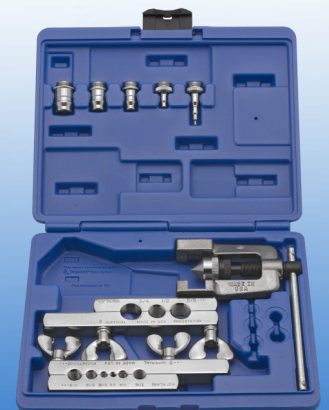
500-FC Faceted, hardened steel, chrome-finished cone rolls out perfect 45° flares above die block, and automatically burnishes flare face reducing the need for deburring. Original wall thickness is maintained at base of flare. New slip-on yoke permits use in tight quarters, where there is little space between nut and tube end. Larger handle, with better leverage, and precision threads on feed screw make flaring effortless. Heat treated dies grip tubing without scoring. Satin chrome and black finish.



FLARING (45°) & SWAGING TOOL

For 1/8" to 3/4" O.D. tubing.

275-FS Flares and swages. Converts quickly. Screw-type feed. Ideal for use in close quarters. Two bars included cover 9 sizes. Swivel-type swaging adapters and flaring cone are hardened steel chrome-finished for easy operation. Self-centering, slip-on forged steel yoke. Flares 1/8", 3/16", 1/4", 5/16", 3/8", 7/16", 1/2", 5/8" and 3/4" O.D. tubing. Includes 5 swage adapters that swage 7 tube sizes: 3/16", 1/4", 5/16", 3/8", 1/2", 5/8" and 3/4" O.D. Supplied in hinged durable tool case.



Hermetic Analyser Safety Wire Twisters



Imperial[®]

DEPENDABLE UNDER PRESSURE[™]

Remember The Annie?

Hermeti-Check 2001

Tests all single phase compressors up to 5 HP, 110, 220 or 277 volts.

Features

- Tied-up compressors may be freed by reversing motor rotations.
- Tests windings for opens, continuity, and grounds.
- Tests start and run capacitors and system relays by substitution.
- Measures running amps, 0-10, 50A range.
- Measures start and run volts, 0-150, 600V AC ranges.
- Compressors are tested in the manner in which they were designed to operate: split-phase, capacitor start, or PSC.
- Has provisions for connecting external run capacitor. (1) 30A breaker protected to allow high starting current with adequate overload protection.
- Complete with 220V adapter cord and capacitor leads.

It's Back!



Quik-Start 2601 starts all single phase compressors up to 5 HP 110, 200, 277V AC. A trouble-shooting aid for determining whether fault lies with compressor or component parts. Fusetron protects against shorts and overloads, but allows high starting load. Capacitor leads provide means of starting split phase, capacitor start, or permanent split capacitor compressors.



Wire Twisters

The world's leading brand of Wire Twister Tools and Kits, Milbar[®] Wire Twisters are designed for the professional mechanic. Milbar forgings are made from high carbon alloy steel and are controlled throughout the manufacturing process to exacting engineering specifications. Each tool passes a series of rigorous quality assurance tests which ensure function and reliability under the most demanding environments. Conforms to ASME Standard B107.500-2010.

Part Numbers

- 25W - 6" Reversible Wire Twister Pliers, Auto Return, Cushion Throat.
- 26W - 9" Reversible. Wire Twister Pliers, Auto Return, Cushion Throat.
- 45W - 6" Reversible Wire Twister Pliers, Auto Return.





NEW!



LD900 Pictured

Refrigerant Leak Detector

The Imperial® LD900 Refrigerant Leak detector features a long life heated sensor technology that is designed to detect the more current and difficult HFC refrigerants such as R-134a in addition to all HCFC and CFC refrigerants including hydrocarbon “blends”. The LD900’s unique digital leak size indicator takes the guesswork out of whether or not to repair a small leak. The digital display is independent from the audio alarm and sensitivity level, allowing the precise pinpointing of the leak source. The LD900 does not require rechargeable batteries .

H2N2 Tracer gas Leak Detector

The LD920 H2N2 Detector utilizes a solid-state heated sensor designed to be highly sensitive to Nitrogen/Hydrogen tracer Gas. The tracer gas mixture complies with Article 6, Paragraph 3 of EU Directive 2006/40/EC. The instrument will detect

tracer gas leaks that are smaller than 5ppm in size. The unique digital display allows for quick and precise pinpointing of the leak source and it indicates the relative size of the system leak. It is CE Certified, and is housed in a rugged ABS high impact plastic case. It is powered by four AA alkaline disposable batteries and does not require rechargeable batteries.

Hydrocarbon Leak Detector

The LD910 utilises a solid state heated sensor designed for high sensitivity to all HC refrigerants and combustible gases including Methane (Natural Gas), Propane (R-290), Isobutene (R-600a), Butane, (LPG), Ethane (R-170), Acetylene, Methanol, Acetone and Gasoline and others. MSHA Certified as Intrinsically Safe. Inspect furnaces, gas appliances, a/c systems, and gas lines fast and safely. Also used to find leaks in fuel and exhaust systems plus to verify the integrity of fuel storage containers. The LD910 uses standard AA alkaline batteries and does not require rechargeable batteries. The unique digital display allows for quick, precise pinpointing of the leak source and also determines the size of the leak. It is housed in a rugged high impact ABS plastic enclosure. A storage case and a leak test vial are included.

Model #	LD900	LD910	LD920
Name	Leak Detector Refrigerant Gas	Leak Detector, Combustible Gas	Leak Detector H2N2 Tracer Gas
Sensitivity	.05 oz/yr R134a	5 ppm (Methane)	< 5 ppm or 2 g/yr R134a equivalent
Sensor Life	>300 hrs	>300 hours	>300 hrs
Power Supply	4 AA Alkaline Batteries	4 AA Alkaline batteries	4 AA Alkaline batteries
Battery Life	6 hours continuous	20 hours continuous	20 hours continuous
Warm up time	<20 secs	<10 seconds	<20 secs
Probe length	17 inches	17 inches	17 inches
Numerical Display	1 to 9	1 to 9	1 to 9
Weight, lbs	1.5 lbs	1.5 lbs	1.5 lbs
Warranty	2 years	2 years	2 years



TC1010

TC1010

The TC1010 Tube cutter handles tubing from 1/8" to 1-1/8" O.D and is specifically designed for the rigours of cutting Stainless Steel and other hard temper tubing. Includes 2 S75046 cutting wheels.

208FSS

Reamer for aircraft grade stainless steel tubing, hard or soft copper, aluminium, brass and steel tubing. Tungsten hardened tool steel cutter blades. Black finish. For 3/16" to 1-1/2" O.D tubing

208FSS



270F Series benders

Available in sizes for 3/8" to 1-1/8" O.D. tubing.

For all bending work. Spur-gear type with 10-to-1 ratio for easy bending of all tempered tubing. Floating shoe aligns tube perfectly on calibrated forming wheel. Pull-pin on wheel speeds repositioning for bends over 90°. Portable. Can be hand held, clamped in vice or bolted to bench.

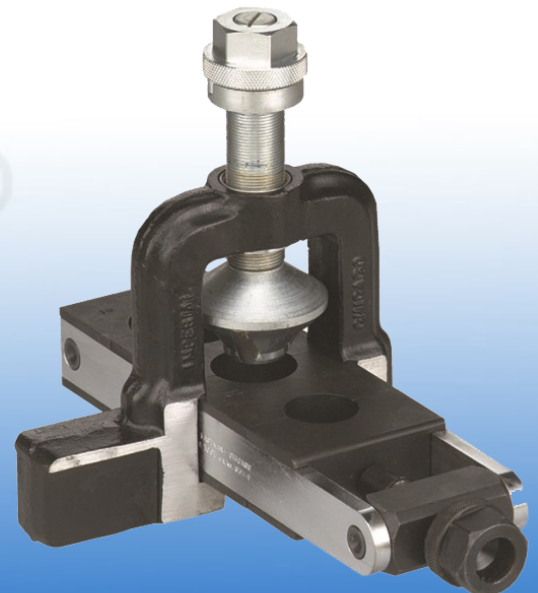
Each tool bends only one size.

CATALOG NUMBER	TUBE O.D. (in.)	RADIUS FROM CTR. TO CENTER OF TUBE (in.)	MIN. RETURN FROM CENTER TO CENTER OF TUBE (in.)	WEIGHT EACH (lbs.)	WALL THICKNESS (in.)
270-F-06	3/8	1-3/4	4-1/2	3	.030 to .060
270-F-08	1/2	2-1/2	6	4.75	.035 to .065
270-F-10	5/8	3	7-1/2	8.5	.040 to .072
270-F-12	3/4	4	9-1/2	15	.042 to .083
270-F-14	7/8	4	9-1/2	14.75	.045 to .083
270-F-16	1	4	9-1/2	14.75	.065 to .095
270-F-18	1-1/8	4	9-1/2	14.25	.065 to .095

537-F Large Size 37° Rol-Air™ Flaring Tool.

For 3/4", 7/8", 1", 1-1/4", 1-1/2" and 2" O.D. tubing.

Three cylinders in flaring cone roll out 37° flare above die block. Flares soft steel, copper, aluminium and fully annealed stainless steel tubing. Roller action reduces effort required; maintains original wall thickness; eliminates stress concentration. Feed release and burnishing action. Vice clamp extension on yoke. Heat treated dies clamp tubing without marking it. Satin chrome and black finish. Includes metal tool case.





**664FH Series HEAVY-DUTY 180°
TUBE BENDER WITH ROTO-LOK[™]
INDEXING HANDLE MAKES TIGHT
BENDS.**

Sizes available for 1/4" to 1/2" O.D.
tubing.
(also available in Metric 6mm - 12mm)

Specifications

Hydraulic Tubing

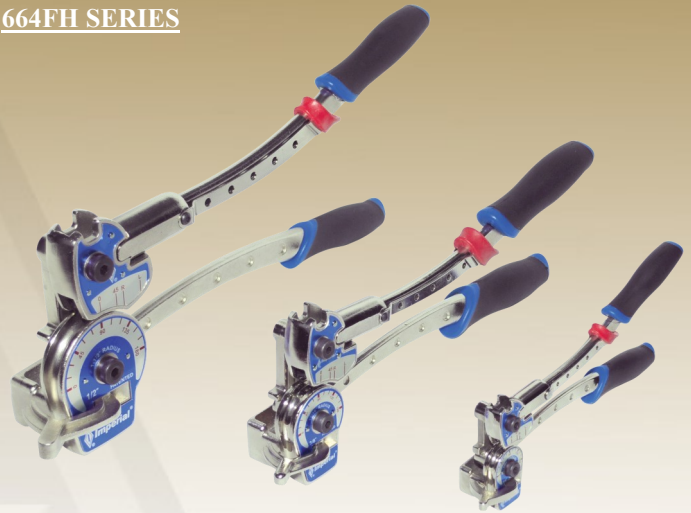
High-quality, soft annealed, seamless carbon steel hydraulic tubing ASTM A179 or equivalent. Hardness 72 HRB (130 HV) or less.

Stainless Steel

Fully annealed high-quality (Type 304, 316 etc.) (seamless or welded and drawn) stainless steel hydraulic tubing ASTM A269 or A213, or equivalent. Hardness 90 HRB (200 HV or less)

664-FH-04 (664FH6MM) Carbon & Stainless 0.028" to 0.065"
664-FH-06 (664FH8MM & 10MM) Carbon 0.035 to 0.065 - Stainless 0.035" to 0.083"
664-FH-08 (664FH12MM) Carbon & Stainless 0.035" to 0.083"

664FH SERIES

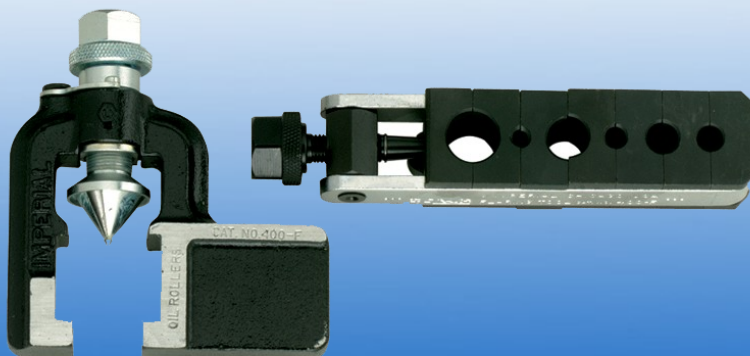


- New design for accurate and tight bends up to 180° in stainless steel and other tough metals.
- Patented, quick action trigger release repositions two-stage handle midway through a bend when both handles begin to meet. This feature allows easy fabrication of optimised bends up to 180° with reduced effort, better control and no crossing of handles!
- Rollers in bending handle reduce friction and bending effort; eliminate scoring of tubing.
- Comfortable and durable ergonomically moulded cushion grips.
- Vice lug for mounting in vice.

400-F **37° ROL-AIR[™] FLARING TOOL**

for 3/16", 1/4", 5/16", 3/8", 1/2" and 5/8" O.D. tubing.

- Forms 37° flares to government specifications in steel, stainless steel (including MIL-T-6845), titanium and other metal tubing.
- Positive stop gauge assures correct size of flare. Special burnishing action polishes flare face.
- Three rollers in flaring cone roll out 37° flare above die block.
- Roller action cuts effort required; maintains original wall thickness - eliminates stress concentration.
- Extension on yoke for clamping in vice. Satin chrome and black finish.
- Furnished in sturdy tool case.



400F

CHARGE OIL PUMP 1702, 1703. Charges without pumping the compressor down thus reducing oil charging time by over 70%. Also avoids the embarrassment of spilling oil on the customer's premises. Provides the professional touch since oil can be accurately measured into the compressor without having to pour it from the can. Fits all popular brands of refrigeration oil. Complete Adapter Kit supplied to accommodate most containers. The Charge-Oil Pump cap seals the can so pump need not be removed until can is empty. Thermal Charge-Oil Pump is a piston type high pressure pump designed to operate at pressures to 250 PSI. It pumps one quart in 20 full strokes of the piston. Pump is connected to compressor by refrigerant charging line or copper tubing from 1/4" male fitting. Suitable for use with alkybenzene and POE oils.

1702 Imperial-Thermal Charge-Oil Pump 1703 Imperial-Thermal Charge-Oil Pump for 5 Gallon Can

CHANGE OIL PUMP 1751 is a companion to the famous Imperial-Thermal Engineering 1700 Charge-Oil Pump. It has been designed for use in pumping oil from refrigeration compressors, marine engines, and other equipment where it is impossible to drain oil in the conventional manner. Removing oil from refrigeration compressors before dehydrating with vacuum is a necessity. Suction tube is 5/16" OD semi-rigid plastic, 15" long. Suction tubes up to 60" long can be used if necessary. Will not pump under pressure. Pumping capacity about 10 strokes per quart.

PUNCH TYPE SWAGING TOOLS

95S Make tubing connections without fittings. Enlarges end of tube, to allow insertion of another tube of original O.D. size to solder together.
One tool swages 3/16", 1/4", 5/16", 3/8", 1/2", 5/8" O.D. tubing. Hi-alloy steel, heat-treated for rugged use. Hex design for ease of extraction.

DEBURRING TOOLS

208F Reamer for 3/16" to 1-1/2" OD copper, aluminium and brass tubing. Hardened steel cutter blades. Reams both inside and outside edges of tube with 3 hollow ground cutters. Tough die cast body. Deburrs both clockwise and counter-clockwise. Fluted body is shaped to fit comfortably in palm.

210F Rotary style blade is perfect for removing burrs from holes and edges. Large ergonomic handle reduces user fatigue. Enclosed handy internal storage cavity for storing extra blades. Ships complete with two heavy duty blades. Suitable for deburring copper, steel, aluminium, zinc, cast iron, brass and plastic tubing.

Your Local Imperial® Tool Stockist is:-



Refrigeration & Air Supplies
(South Coast)

Ph: 024226 5133

WARRANTY / LIFETIME WARRANTY

Any product manufactured by Imperial® that fails to render service due to defect in workmanship or materials will be replaced or repaired at no charge as per the warranty schedule. Product failures due to misuse, abuse, normal wear and tear or alterations are not covered by the Lifetime Warranty. Wear items will need to be replaced over time, and are not included (such as cutter wheels, seals, gaskets, o-rings and gauges). Imperial makes no other warranty, expressed or implied. Tools should be returned to the Buyer's place of purchase. Electronic tools have individual warranties as described in the owners manual



The Imperial® Tool range is distributed in Australia by BROADTECH SUPPLIES & SERVICES PTY LTD ACN 137 975 716 AS TRUSTEE FOR BTSS TRUST ABN 75 657 607 702 Trading as Cool Tools Australia, and in New Zealand by Broadtech Supplies and services NZ Ltd. Email sales@cool-tools.com.au Tel +61 8 8278 9694 Fax +61 8 8278 5312
The Imperial Diamond and any Logo are used with the express permission of Stride Tool LLC, 30333 Emerald Valley Pkwy., Glenwillow, OH 44139 USA .

All trademarks and registered trademarks are property of Stride Tool LLC. © Stride Tool LLC 2016
Copyright© Broadtech Supplies and Services Pty Ltd and Broadtech Supplies and services NZ Ltd 2016